

ALL SS PRESSURE GAUGE



SOLID FRONT

SPECIAL FEATURES

- EXTERNAL ZERO ADJUSTMENT (OPTIONAL)
- SOLID FRONT DESIGN FEATURES BAFFLE WALL INTERPOSED BETWEEN THE SENSING SYSTEM & THE WINDOW, AND A PRESSURE RELIEVING BACK FOR INCREASED SAFETY.
- DRY OR FILLABLE VERSION.
- ACCURACY $\pm 0.5\%$ F. S. (OPTIONAL)
- STAINLESS STEEL BLOW OFF BACK
- STANDARD FOLLOWED EN 837-1

APPLICATIONS

SUITABLE FOR HIGH PRESSURE GAS, CORROSIVE / HAZARDOUS ENVIRONMENT THAT WILL NOT OBSTRUCT THE PRESSURE SYSTEM.

SPECIFICATIONS

STANDARD VERSION : 63 mm, 100 mm & 150mm

Accuracy	:	$\pm 1.0\%$ of F. S. for NS 100 mm & 150 mm
	:	$\pm 1.6\%$ of F. S. for NS 63 mm
Ambient temperature	:	- 20°C to + 65°C
Process temperature	:	Max 300°C
Operating pressure Range	:	75 % of Scale Value
Over pressure limit	:	≤ 100 bar : 125% of Max. Scale Value
	:	> 100 to ≤ 600 bar : 115% of Max. Scale Value
	:	> 600 to ≤ 1600 bar : 110% of Max. Scale Value

Case & Bezel	:	AISI 304 SS (Bayonet Type)
Bourdon	:	AISI 316L SS
Socket	:	AISI 316L SS (Directly welded to case)
Movement	:	AISI 304 SS
Joints	:	Tig Argon Arc Welding

Protection	:	IP 65
Dial	:	Aluminum, black graduation on white background
Pointer	:	Aluminum, black Coloured Micrometer Zero Adjustable (Fixed for NS 63 mm)
Window	:	Shatterproof / Safety Glass
Blow off Disc	:	AISI 304 SS
Gasket & Filling Plug	:	Neoprene

DRY BUT FILLABLE VERSION (OPTION FG)

Fillable Dampening Liquid	:	Glycerine 99.7%
Ambient Temperature	:	Maximum 65°C
Process Temperature	:	Maximum 65°C
Window	:	Shatterproof / Safety Glass
Other Features	:	Refer Specification of Standard Version

GLYCERINE FILLED VERSION (OPTION PY)

Accuracy	:	$\pm 1.0\%$ of F. S. for NS 100 mm & 150 mm
	:	$\pm 1.6\%$ of F. S. for NS 63 mm
Ambient Temperature	:	Maximum 65°C
Window	:	Shatterproof / Safety Glass
Dampening Liquids	:	Glycerine 99.7% (Others available as Option)
Other Features	:	Refer Specification of Standard Version

Temperature effect:

The variation of indication caused by effects of temperature is to be calculated by below formula; which is to be added in the specified accuracy while measurement :-

Formula : $\pm 0.04 \times (t_2 - t_1) \%$ of F. S.

where t_1 = reference temperature (+20°C) and t_2 = ambient temperature in °C.



IPS-PG-04



Industrix Precise Solutions Private Limited

Room No – 303, Bhumika Residency, Plot No-21, Sector-20, Roadpali, Kalamoli, Panvel (Tal.), Raigad (Dist.), Maharashtra, India – 410218.

Mobile: +91 99309 98399 / +91 99674 97447

E-mail: admin@ipspl.in / sales@ipspl.in Website: www.ipspl.in

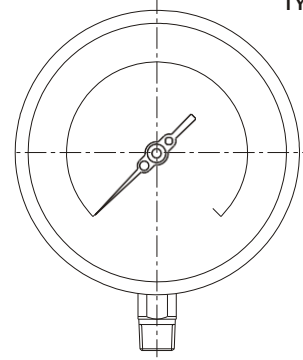
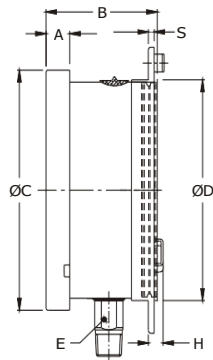
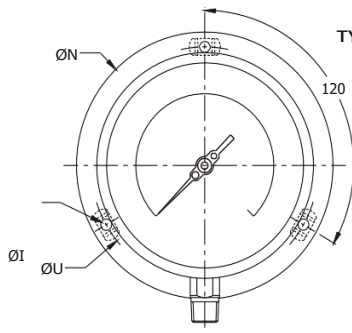
CIN : U52399MH2021PTC368555

ALL SS PRESSURE GAUGE

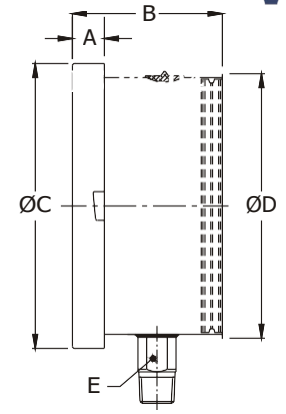
IPS-PG-04



DIMENSIONS - STANDARD VERSION

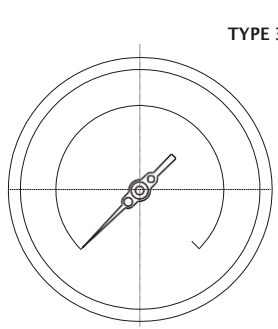


TYPE 2

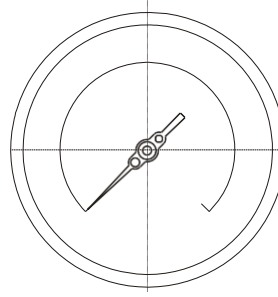
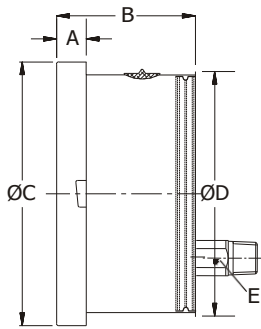


NS	A	B	ØC	ØD	E	ØN	ØU	H	ØI	S	Weight in gram (With Box)	Weight in gram (With Glycerin & Box)
63	11	56	69.5	62.5	14	86	75	11	3.5	1	320.0	430.0
100	12.5	70	111	100	22	134	118	15	6	1	860.0	1170.0
150	15	70	161	149	22	186	168	15	6	1	1440.0	2230.0

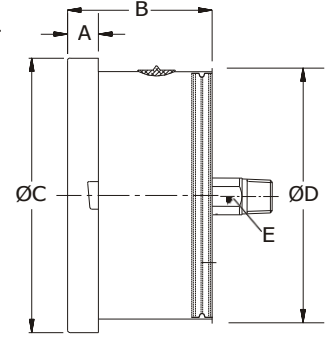
NS	A	B	ØC	ØD	E	Weight in gram (With Box)	Weight in gram (With Glycerin & Box)
63	11	56	69.5	62.5	14	300.0	410.0
100	12.5	70	111	100	22	760.0	1070.0
150	15	70	161	149	22	1300.0	2090.0



TYPE 3



TYPE 4



NS	A	B	ØC	ØD	E	Weight in gram (With Box)	Weight in gram (With Glycerin & Box)
100	12.5	64	111	100	22	700.0	1010.0
150	15	66	161	149	22	1200.0	1990.0

NS	A	B	ØC	ØD	E	Weight in gram (With Box)	Weight in gram (With Glycerin & Box)
63	11	56	69.5	62.5	14	290.0	400.0

Notes : • Drawings are not to scale. • All Dimensions are in mm . • NS = Nominal Seize
• Weights mentioned are approximate and for standard product. Weight can be different after selection of options.

SCALE TABLE

Note : IPSPL offers National / International Scales like kPa, MPa, bar, psi, kg/cm² & Dual Scale like kPa with psi, kPa with bar, bar with psi or Equivalent scales as per the requirement can be provided on request.

Following are the example tables for kg/cm² or bar & psi scales

PRESSURE RANGE

SINGLE SCALE (kg/cm ² or bar)					
0/0.6*	0/4	0/25	0/160	0/1000*	
0/1	0/6	0/40	0/250	0/1600*	
0/1.6	0/10	0/60	0/400	0/2100*	
0/2.5	0/16	0/100	0/600		
DUAL SCALE (psi with kg/cm ²)					
psi	kg/cm ²	psi	kg/cm ²	psi	kg/cm ²
0/15	0/1	0/400	0/28	0/4000	0/280
0/30	0/2	0/500	0/35	0/5000	0/350
0/60	0/4	0/600	0/40	0/6000	0/400
0/100	0/7	0/1000	0/70	0/10000	0/700*
0/150	0/10	0/1500	0/100	0/15000	0/1000*
0/220	0/16	0/2200	0/160	0/22000	0/1600*
0/300	0/20	0/3000	0/200	0/30000	0/2000*

* Applicable for NS 100 mm & 150 mm only.



IndustriX Precise Solutions Private Limited

Room No – 303, Bhumika Residency, Plot No-21, Sector-20, Roadpali, Kalamboli, Panvel (Tal.), Raigad (Dist.), Maharashtra, India – 410218.

Mobile: +91 99309 98399 / +91 99674 97447

E-mail: admin@ipspl.in / sales@ipspl.in Website: www.ipspl.in

CIN : U52399MH2021PTC368555



VACUUM & COMPOUND RANGE

DUAL SCALE					
inHg with psi	mmHg with kg/cm ²	inHg with psi	mmHg with kg/cm ²	inHg with psi	mmHg with kg/cm ²
- 30/0	- 760 / 0	- 30/60	- 760 / 4	- 30/200	- 760 / 14
- 30/15	- 760 / 1	- 30/100	- 760 / 7	- 30/300	- 760 / 21
- 30/30	- 760 / 2	- 30/150	- 760 / 10		
SINGLE SCALE (kg/cm ² or bar)					
- 1/0	- 1/1.5	- 1/5	- 1/15		
- 1/0.6	- 1/3	- 1/9	- 1/24		

ACCESSORIES (Refer Datasheet for complete specifications)

EB COOLING TOWER	* NEEDLE VALVE
EC GAUGE COCK	EG SNUBBER
ED OVERLOAD PROTECTOR (GAUGE SAVER)**	EH SIPHON

* Refer catalogue for Valves & Manifolds

** For Pressure Ranges.

HOW TO ORDER

IPS-PG-04

BASIC MODEL

CODE

NOMINAL SIZE

D	F	H
63 mm	100 mm	150 mm

TYPE OF MOUNTING

- 1 WALL / SURFACE / PROJECTION MOUNTING WITH BOTTOM ENTRY
- 2 DIRECT BOTTOM ENTRY
- 3 DIRECT LOWER BACK ENTRY (NEVER FILLABLE)
- 4 DIRECT CENTRE BACK ENTRY (NS 63 mm & NEVER FILLABLE)

GAUGE CONNECTION (* Preferred for NS 63 mm)

2BM 1/4" BSP (M)(Standard)*	3BM 3/8" BSP (M)	4BM 1/2" BSP (M)(Standard)
2NM 1/4" NPT (M)(Standard)*		4NM 1/2" NPT (M)(Standard)

Note : Connections like Metric/ PT/ PF/ Flaired/ UNF/ G/ R etc can be provided on request.

RANGE

REFER RANGE TABLE

OPTIONAL EXTRAS

OA ACCURACY ± 0.5% OF F. S. ** (DRY VERSION & MAXIMUM READING POINTER)	SX SS TAG PLATE
TI MONEL BOURDON & SOCKET (MONEL VERSION)**●	SW DIAL TAG MARKING
FL INTEGRAL DAMPENING SCREW (MONEL)●	TB HELIUM LEAK TEST
FS FILLABLE LIQUID SILICON OIL*	TF CONFORMITY AS PER NACE MR 0175
FG FILLABLE LIQUID GLYCERINE	PW FIVE POINT FACTORY CALIBRATION CERTIFICATE
PZ DAMPENING LIQUID MINERAL LIQUID FILLED	SG OXYGEN SERVICE (FOR DRY VERSION)
PX DAMPENING LIQUID FLOUROLUBE FILLED	RH CUSTOM DESIGNED DIAL
PY DAMPENING LIQUID GLYCERINE FILLED	QB INTEGRAL DAMPENING SCREW (AISI 316 SS)
QA DAMPENING LIQUID SILICON OIL FILLED*	SA INTERNAL OVER PRESSURE STOP**
RW PLEXI GLASS	SB INTERNAL VACUUM STOP**
SF MOVEMENT WITH DAMPENING JELLY	PS AISI 316 SS CASE & BEZEL
RR ENCLOSURE PROTECTION IP 66	SD AISI 316 SS MOVEMENT **
RE ENCLOSURE PROTECTION IP 67	KA ON - OFF TYPE VENT PLUG
PU CALIBRATION CERTIFICATE TRACEABLE TO NATIONAL/ INTERNATIONAL STANDARDS	ZL OVER RANGE PROTECTION 150% OF F. S.**
GH MATERIAL TEST CERTIFICATES***	EZ EXTERNAL ZERO ADJUSTMENT**

*Gasket & Filling plug of NBR. Refer Price List for Viton.

**Applicable for NS 100 mm & 150 mm only.

*** MATERIAL TEST CERTIFICATES WILL BE PROVIDED FOR WETTED PARTS ONLY WITH CHEMICAL COMPOSITION TESTING. FOR OTHERS, PLEASE CONSULT FACTORY.

● INTEGRAL DAMPENING SCREW WILL BE IN MONEL IF ORDERED. REFER OPTION FL.

Note : Specifications and dimensions given in this product catalogue represents the state of engineering at the time of printing.

Modifications may take place and materials specified may be replaced by others without prior notice.



Industrix Precise Solutions Private Limited

Room No – 303, Bhumika Residency, Plot No-21, Sector-20, Roadpali, Kalamboli, Panvel (Tal.), Raigad (Dist.), Maharashtra, India – 410218.

Mobile: +91 99309 98399 / +91 99674 97447

E-mail: admin@ipspl.in / sales@ipspl.in Website: www.ipspl.in

CIN : U52399MH2021PTC368555

0-10
kg/cm²

X

X

XXX

XX