

HIGH OVERPRESSURE SAFETY GAUGE



IPS-PG-05

SOLID FRONT

SPECIAL FEATURES

- STAINLESS STEEL CASE & MEASURING SYSTEM
- SOLID FRONT DESIGN FEATURES BAFFLE WALL INTERPOSED BETWEEN THE SENSING SYSTEM & THE WINDOW, AND PRESSURE RELIEVING BACK FOR INCREASED SAFETY.
- SOCKET & CASE WELDED
- DRY OR LIQUID FILLED
- STAINLESS STEEL BLOW OFF BACK
- STANDARD FOLLOWED IN GENERAL EN 837-1

APPLICATIONS

ESPECIALLY SUITED FOR OCCASIONAL SHORT DURATION OVER PRESSURES OF UPTO 4 TIMES SCALE RANGE. (EXACT VALUES SEE TABLE)
SUITABLE FOR CORROSIVE ENVIRONMENTS & GASEOUS OR LIQUID MEDIA THAT WILL NOT OBSTRUCT THE PRESSURE SYSTEM.

SPECIFICATIONS

STANDARD VERSION : 100 mm & 150 mm

Accuracy	: ±1.0% FOR RANGE SCALE ONLY & : ±3.0% FOR END SCALE (END SCALE IS COVERED WITH TRIANGLE)
Ambient temperature	: - 20°C to + 65°C
Process temperature	: Max. 300°C
Operating pressure range	: 75% of Scale Value
Over pressure limit	: Refer Table

Case & Bezel	: AISI 304 SS (Bayonet Type)
Bourdon	: AISI 316L SS
Socket	: AISI 316L SS
Movement	: AISI 304 SS
Joints	: Tig Argon Arc Welding

Protection	: IP 65
Dial	: Aluminum, black graduation on white background :(The scale end is marked by a black triangle)
Pointer	: Aluminum, black Coloured Micrometer Zero Adjustable
Window	: Shatterproof / Safety Glass
Blow off Disc	: AISI 304 SS
Gasket & Filling Plug	: Neoprene

GLYCERINE FILLED VERSION (OPTION PY)

Accuracy	: ±1.0% FOR RANGE SCALE ONLY & : ±3.0% FOR END SCALE (END SCALE IS COVERED WITH TRIANGLE)
Ambient Temperature	: Maximum 65°C
Dampening Liquids	: Glycerine 99.7%
Other Features	: Refer Specification of Standard Version

Temperature effect:

The variation of indication caused by effects of temperature is to be calculated by below formula; which is to be added in the specified accuracy while measurement :-
Formula : $\pm 0.04 \times (t_2 - t_1) \% \text{ of F. S.}$
where t_1 = reference temperature (+20°C) and t_2 = ambient temperature in °C.



Industrix Precise Solutions Private Limited

Room No – 303, Bhumika Residency, Plot No-21, Sector-20, Roadpali, Kalamboli, Panvel (Tal.), Raigad (Dist.), Maharashtra, India – 410218.

Mobile: +91 99309 98399 / +91 99674 97447

E-mail: admin@ipspl.in / sales@ipspl.in Website: www.ipspl.in

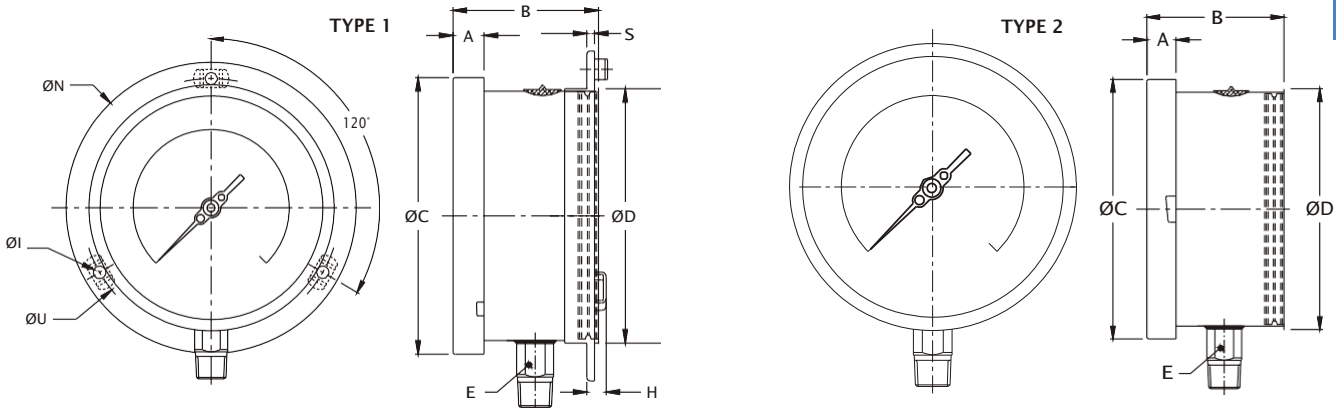
CIN : U52399MH2021PTC368555

HIGH OVERPRESSURE SAFETY GAUGE



IPS-PG-05

DIMENSIONS - STANDARD VERSION



NS	A	B	ØC	ØD	E	ØN	ØU	H	ØI	S	Weight in gram (With Box)
100	12.5	70	111	100	22	134	118	15	6	1	870.0
150	15	70	161	149	22	186	168	15	6	1	1440.0

NS	A	B	ØC	ØD	E	Weight in gram (With Box)
100	12.5	70	111	100	22	770.0
150	15	70	161	149	22	1300.0

Notes : • Drawings are not to scale. • All Dimensions are in mm. • NS = Nominal Size

RANGE TABLE

Note : IPSPL offers National / International Scales like kPa, Mpa, bar, psi, kg/cm² & Equivalent scales as per the requirement can be provided on request.

Following are the example tables for kg/cm² / bar with overload range.

SCALE & OVERLOAD RANGES

SINGLE SCALE (kg/cm ² or bar)			
RANGE	OVERLOAD RANGE	RANGE	OVERLOAD RANGE
0/0.6	2.5	0/6	25
0/1	4	0/10	40
0/1.6	6	0/16	60
0/2.5	10	0/25	80
0/4	16	0/40	100

HOW TO ORDER

BASIC MODEL

CODE

NOMINAL SIZE

F	H
100 mm	150 mm

TYPE OF MOUNTING

- WALL/ SURFACE / PROJECTION MOUNTING WITH BOTTOM ENTRY
- DIRECT BOTTOM ENTRY

GAUGE CONNECTION

4BM	½" BSP (M) STANDARD	2NM	1/4" NPT (M)	4NM	½" NPT (M) STANDARD
-----	---------------------	-----	--------------	-----	---------------------

RANGE

REFER RANGE TABLE

OPTIONS

PW	FIVE POINT CALIBRATION CERTIFICATE	TB	HELIUM LEAK TEST
RH	CUSTOM DESIGNED DIAL	SF	MOVEMENT WITH DAMPENING JELLY
SW	DIAL TAG MARKING	PY	DAMPENING LIQUID GLYCERINE FILLED
SX	SS TAG PLATE	GH	MATERIAL TEST CERTIFICATES*

*MATERIAL TEST CERTIFICATES WILL BE PROVIDED FOR WETTED PARTS ONLY WITH CHEMICAL COMPOSITION TESTING. FOR OTHERS, PLEASE CONSULT FACTORY.

Note : Specifications and dimensions given in this product catalogue represents the state of engineering at the time of printing.

Modifications may take place and materials specified may be replaced by others without prior notice.

IPS-PG-05

X

X

XXX

0-10
kg/cm²

XX



IndustriX Precise Solutions Private Limited

Room No – 303, Bhumika Residency, Plot No-21, Sector-20, Roadpali, Kalamboli, Panvel (Tal.), Raigad (Dist.), Maharashtra, India – 410218.

Mobile: +91 99309 98399 / +91 99674 97447

E-mail: admin@ipspl.in / sales@ipspl.in Website: www.ipspl.in

CIN : U52399MH2021PTC368555