

DIAPHRAGM SEAL

SANITARY SEAL (CLAMP TYPE)



IPS-DS-05

SPECIAL FEATURES

- LASER WELDED FLUSH DIAPHRAGM
- QUICK CONNECT / DISCONNECT FOR EASY CLEANING
- SUITABLE FOR FOOD, DAIRY & PHARMACEUTICAL INDUSTRIES

APPLICATIONS

DIAPHRAGM SEALS ARE PROVIDED IN THE INSTRUMENTS LIKE PRESSURE GAUGES, SWITCHES, TRANSMITTERS IN ORDER TO ISOLATE THE SENSING ELEMENT FROM THE MAIN SERVICE DUE TO ITS CORROSIVE, VISCOUS AND SEDIMENTED NATURE AND TO AVOID CLOGGING AND SOLIDIFICATION.

THESE SEALS ARE USED IN HYGIENIC APPLICATIONS WHERE PURITY IN PROCESS IS ESSENTIAL - TYPICALLY IN FOOD, DAIRY BEVERAGES AND PHARMACEUTICAL INDUSTRIES.

SPECIFICATIONS

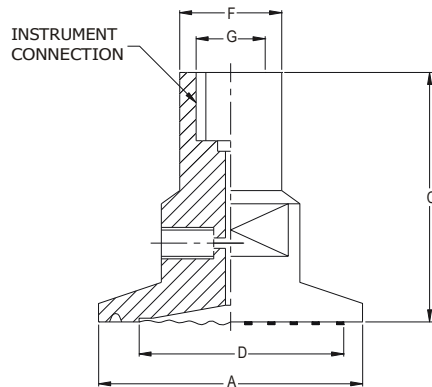
STANDARD VERSION

Seal Type	: S16 = -1 to 0 & 0 to 40 kg/cm ² (Standard)
	: S17 = -1 to 0 & 0 to 40 kg/cm ² (Dry Seal only)
Process Temperature	: 10°C to 150°C or as per fill fluid
Instrument Connection	: S16 = 1/2" BSP (F)
	: S17 = 1/4" BSP (F)
Process Connection	: 1 1/2" SANITARY SEAL (without clamp & gasket)
Mounting	: Direct (Without capillary)

Diaphragm	: AISI 316L SS
Body	: AISI 316 SS
Fill Fluid	: Glycerin

DIMENSIONS - STANDARD VERSION

TYPE 'S17'



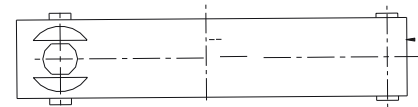
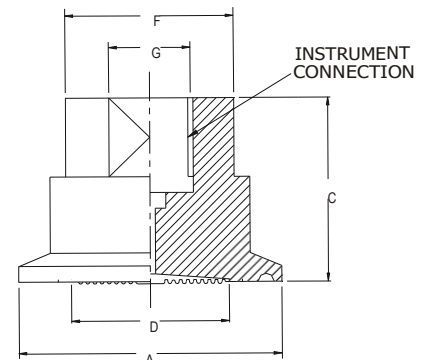
Size	A	C	D	F	G	Approx. Wt. #
1.5"	50.5	48	32	19.50	1/4"BSP (F)	250.0
2"	64	48	40	19.50	1/4"BSP (F)	400.0
2.5"	77.5	48	52	19.50	1/4"BSP (F)	600.0

(# Weight in grams with box for Standard Model.)

Notes : ● Drawings are not to scale. ● All Dimensions are in mm.



TYPE 'S16'



CLAMP (OPTIONAL)

Size	A	C	D	F	G	Approx. Wt. #
1"	50.50	35	22	29.5	1/2" BSP (F)	200.0
1 1/2"	50.50	35	32	38.5	1/2" BSP (F)	200.0
2"	64	35	40	51.5	1/2" BSP (F)	350.0
2 1/2"	77.5	35	52	64	1/2" BSP (F)	500.0

(# Weight in grams with box for Standard Model.)



Industrix Precise Solutions Private Limited

Room No – 303, Bhumika Residency, Plot No-21, Sector-20, Roadpali, Kalamboli, Panvel (Tal.), Raigad (Dist.), Maharashtra, India – 410218.

Mobile: +91 99309 98399 / +91 99674 97447

E-mail: admin@ipspl.in / sales@ipspl.in Website: www.ipspl.in

CIN : U52399MH2021PTC368555



HOW TO ORDER

BASIC MODEL

CODE

OPTIONAL EXTRAS

IPS-DS-05

[It is recommended that the size of the end connection of bottom mating part should be equivalent or greater than ½" Pipe.]

SEAL TYPE

S16 -1 to 0 & 0 to 40 kg/cm² (Standard) **S17** -1 to 0 & 0 to 40 kg/cm² (Dry seal only)

XXX

SANITARY SEAL

YM 1" SANITARY SEAL IN AISI 316 SS
YN 1½" SANITARY SEAL IN AISI 316 SS (Standard)
YO 2" SANITARY SEAL IN AISI 316 SS
YP 2½" SANITARY SEAL IN AISI 316 SS

XX

INSTRUMENT CONNECTION (* For Dry Seal Type: S17)

VO ¼" NPT (F) **VN** ¼" BSP (F) (Standard)* **VP** 3/8" BSP (F)
VM ½" NPT (F) **VL** ½" BSP (F) (Standard)

XX

BODY

CL AISI 316 SS (Standard) **CM** AISI 316L SS

XX

BOTTOM MATING PART

KF 1" SANITARY SEAL IN AISI 316 SS **KC** 2" SANITARY SEAL IN AISI 316 SS
KB 1½" SANITARY SEAL IN AISI 316 SS **KD** 2½" SANITARY SEAL IN AISI 316 SS

END CONNECTION OF BOTTOM MATING PART

4ZB ½" PIPE, Sch. 40 (Plain End) **5ZB** ¾" PIPE, Sch. 40 (Plain End)

XX

NOTE : THREADED CONNECTIONS ARE AVAILABLE ON REQUEST. PLEASE CONSULT FACTORY.

DIAPHRAGM

UJ AISI 316L (Standard)

XX

FILLING FLUIDS

UF GLYCERIN [10 to 150°C / 50 to 302°F] (Standard) **UG** LIQUID PARAFFIN [10 to 200°C / 50 to 392°F]
UV FOOD GRADE OIL [-20 to 140°C / -4 to 284°F]

XX

CLAMP

ZN 1" CLAMP AISI 304 SS **ZP** 2" CLAMP AISI 304 SS
ZO 1½" CLAMP AISI 304 SS **ZQ** 2½" CLAMP AISI 304 SS

XX

GASKET (SEALING RING)

FU 1" SILICON GASKET **GW** 1" PTFE GASKET
FX 1½" SILICON GASKET **GX** 1½" PTFE GASKET
FY 2" SILICON GASKET **GY** 2" PTFE GASKET
FZ 2½" SILICON GASKET **GZ** 2½" PTFE GASKET

XX

REMOTE MOUNTING (With capillary of Max. Up to 2 Mtrs.)

SPECIFY IN METERS (e.g. 1.5 = 1.5 METERS 2.0 = 2 METERS)

CAPILLARY

PE AISI 304 SS **PG** AISI 316 SS

XX

CAPILLARY COVERED WITH ARMOUR (Applicable with PE or PG if selected)

PF AISI 304 SS **PH** AISI 316 SS **PI** PVC (Ambient Temp. Max. 60°C)

XX

OTHER OPTIONS

TB HELIUM LEAK TEST **TC** DRY SEAL ONLY WITHOUT INSTRUMENT **GH** MATERIAL TEST CERTIFICATES*

XX

* MATERIAL TEST CERTIFICATES WILL BE PROVIDED FOR WETTED PARTS ONLY WITH CHEMICAL COMPOSITION TESTING. FOR OTHERS, PLEASE CONSULT FACTORY.

Note : Specifications and dimensions given in this product catalogue represents the state of engineering at the time of printing.

Modifications may take place and materials specified may be replaced by others without prior notice.

1Mtr.

