



IPS-TW-05



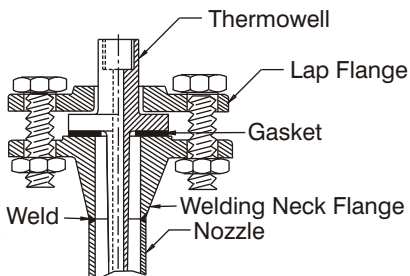
Special Features

- Design as per PTC 19.3.
- These Thermowells are machined from solid bar stock and mounted between mating flanges for process insertion.
- This design is suitable for all type of RTD's, Thermocouples, mechanical as well as digital thermometers.

Applications

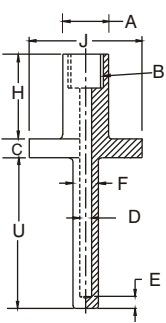
Chemical plants, Petrochemical Plants, Engineering Plants, On shore, Offshore & other similar process industries.

Thermowell Installation

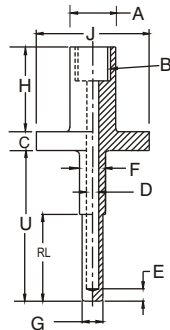


The dimensions of the Vanstone collar corresponds to the mating raised face diameter of the process flange. During installation, a gasket is inserted between the process flange and the Vanstone collar to maintain a pressure seal. A top flange is then placed over the Vanstone thermowell and bolted to the process flange with proper bolt size & material.

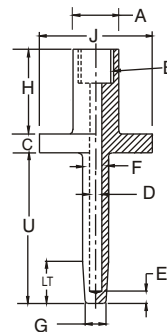
Thermowell Drawings



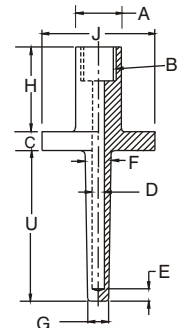
S - STRAIGHT



R - STRAIGHT REDUCED TIP



P - PARTIAL TAPER



F - FULL TAPER

A - Finished Head Size

E - Tip Thickness

U - Insertion Length

B - Instrument Connection

F - Major Diameter

RL - Reduced Tip Length

C - Collar

G - Minor Diameter

LT - Taper Length

D - Bore Diameter

H - Extension Length

J - Collar Diameter

HOW TO ORDER

BASIC MODEL

IPS-TW-05

TYPE

S - STRAIGHT **R** - STRAIGHT REDUCED TIP **P** - PARTIAL TAPER **F** - FULL TAPER

X

MATERIAL

LM AISI 316 SS	EP AISI 410 SS	LT Monel	LV Titanium
LN AISI 316L SS	EQ AISI 347 SS	LU Inconel 600	LX Nickel
LP AISI 304 SS	LO AISI 316Ti SS	ES Inconel 625	LY HRS 446
ER AISI 304L SS	EO AISI 310 SS	ET Incolloy 800	LZ Alloy 20
EN AISI 321 SS	LQ Carbon Steel	EU Incolloy 825	LS Hastelloy C

XX

Note : Other Materials are available on request.

INSTRUMENT CONNECTION

4BF 1/2" BSP (F)	5TF 3/4" BSPT (F)	6NF 1" NPT (F)	3MF M18 x 1.5 (F)	6MF M24 x 1.5 (F)
4NF 1/2" NPT (F)	5NF 3/4" NPT (F)	6BF 1" BSP (F)	4MF M20 x 1.5 (F)	7MF M27 x 2 (F)
4TF 1/2" BSPT (F)	5BF 3/4" BSP (F)	6TF 1" BSPT (F)	5MF M22 x 1.5 (F)	9MF M33 x 2 (F)
4FF 1/2" PF (F)	5PF 3/4" G (F)	6PF 1" G (F)		
4PF 1/2" G (F)				

XXX

Note : Other Connections are available on request.

COLLAR DIAMETER

- A** Suitable to Raised Face of 1" ANSI Flange (51 mm)
- B** Suitable to Raised Face of 1 1/2" ANSI Flange (73 mm)
- C** Suitable to Raised Face of 2" ANSI Flange (92 mm)

X

COLLAR THICKNESS

- 1** 3/8" (9.52 mm Thk.)

X

COLLAR FACING

- F** Flat Face

X

EXTENSION / LAGGING LENGTH "H" (EXCLUDING COLLAR)

40 mm (Standard)

Please specify in mm For e.g. : for length 40 mm, mention **H40**

XXX

FINISHED HEAD SIZE "A"

Please Specify in mm

e.g. : For 28 mm Finished head Size, Specify **A28**

XXX

TYPE OF HEAD

- L** ROUND HEADED

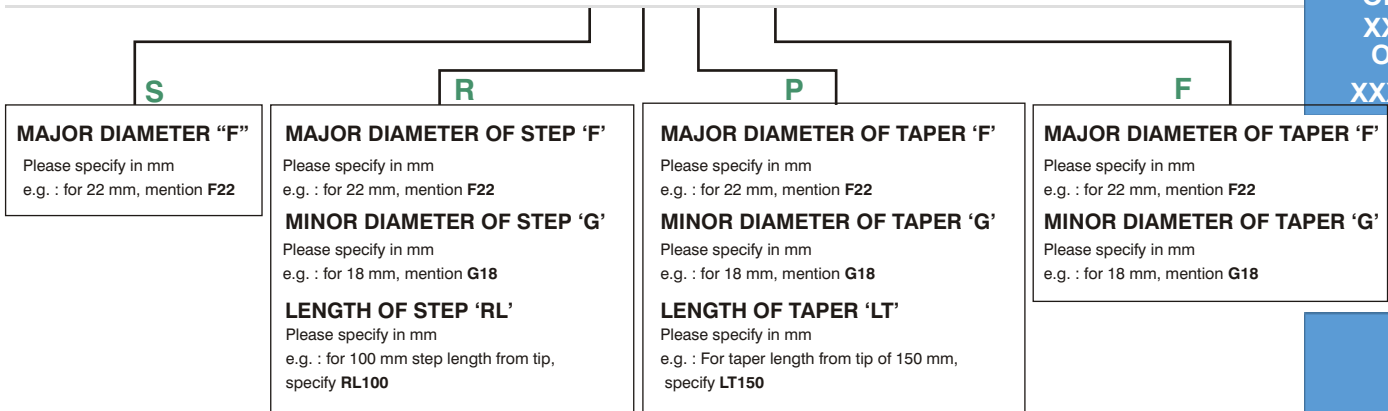
BORE DIAMETER "D"

A 6.6 mm	B 7 mm	C 8.5 mm	D 9 mm
E 10.5 mm	F 11 mm	G 13 mm	H 13.5 mm

X

Note : Refer Table 1.3 of Thermowell Design Procedure for dimensions as per PTC 19.3

MAJOR DIAMETER “F”



XXX
OR
XXX
OR
XXXX

Note : Refer Table 1.3 of Thermowell Design Procedure for dimensions as per PTC 19.3

TIP THICKNESS “E”

Standard Tip Thickness is 5 mm. e.g. : Specify **E5** for 5 mm Tip Thickness. For others, please specify in mm.

XX

INSERTION LENGTH “U”

Please specify in mm e.g. : for 250 mm, mention **U250**

Note : Refer Table 1.4 of Thermowell Design Procedure for dimensions as per PTC 19.3

XXXX

OPTIONS

GG Plug and chain in SS	CX Marking by Engraving
FW Electro polishing	CW Marking by Lazer

XX

TESTS & CERTIFICATION

C1 Radiography for Bore Concentricity	C8 Certification for Hydrogen Service
C3 Mechanical Test	C9 Certification for Oxygen Service
C4 Ultrasonic Test	T1 Chemical Composition Test
C5 PMI Test	T2 3.1B Material Conformity Certificate
C6 IGC Test	TF Tested to NACE Standard
C7 Wake Frequency Calculations as per PTC 19.3*	

XX

* Please Specify Fluid, Max. Pressure, Temperature & Flow velocity for wake frequency calculations as per PTC 19.3

Note : Specifications and dimensions given in this product catalogue represents the state of engineering at the time of printing.
Modifications may take place and materials specified may be replaced by others without prior notice.

