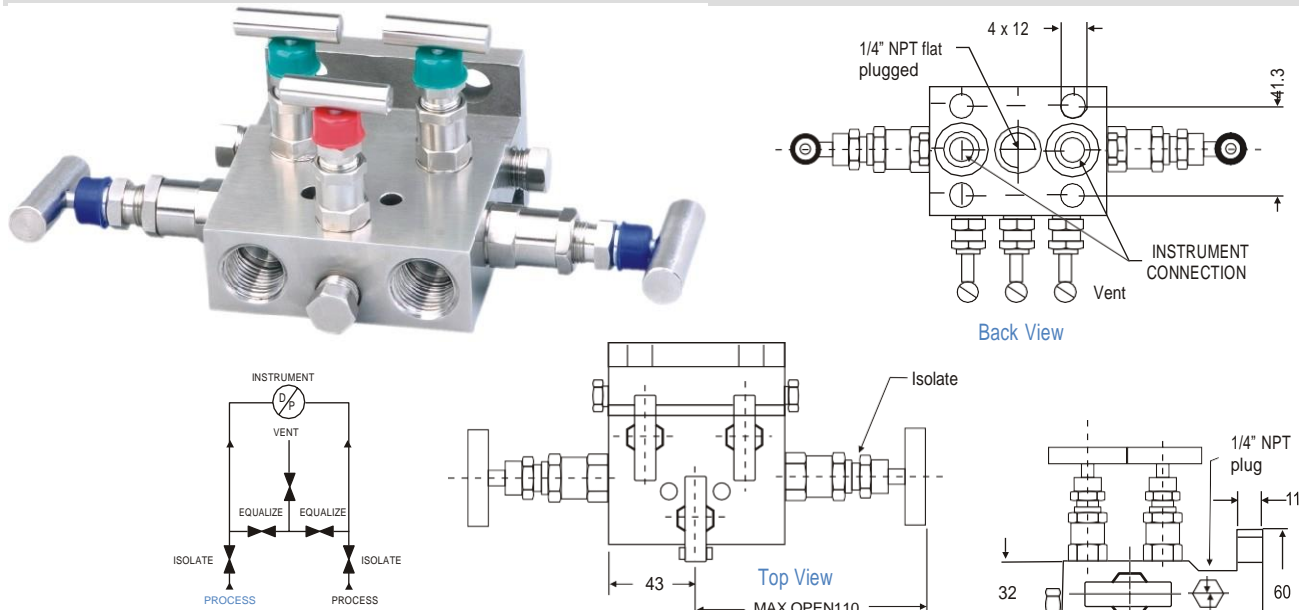


# FIVE VALVE MANIFOLDS

## DIRECT MOUNT (Pipe to Flange)

IPS-MV-PF5-03

**Five Valve Manifold Special Series** to accommodate any half DIN 19213 interface complaint pressure transmitter. 2 inlets NPT female at front and 2 outlets Flange at back side DIN 19213. Vent/test connection at front, equalizing bonnets at top side, isolating bonnets at left and right side-venting bonnet at top.



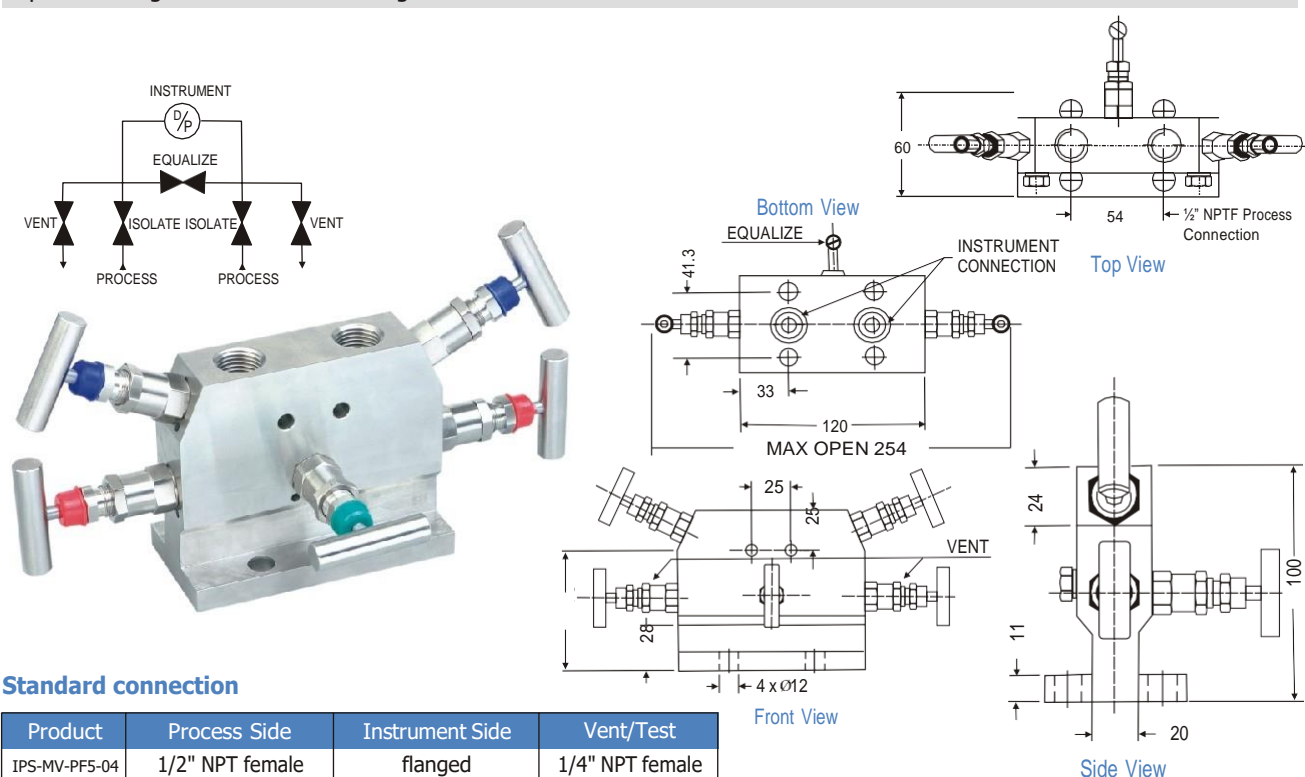
### Standard connection

Product	Process Side	Instrument Side	Vent/Test
IPS-MV-PF5-03	1/2" NPT female	flanged	1/4" NPT female

## DIRECT MOUNT (Pipe to Flange)

IPS-MV-PF5-04

With threaded horizontal port inlets and Flange port outlets. The vent/test ports are positioned on the bottom side. The isolating and venting bonnets are positioned on the left and right hand side and the equalizing bonnet is positioned on the top side. Designed for direct mounting.



### Standard connection

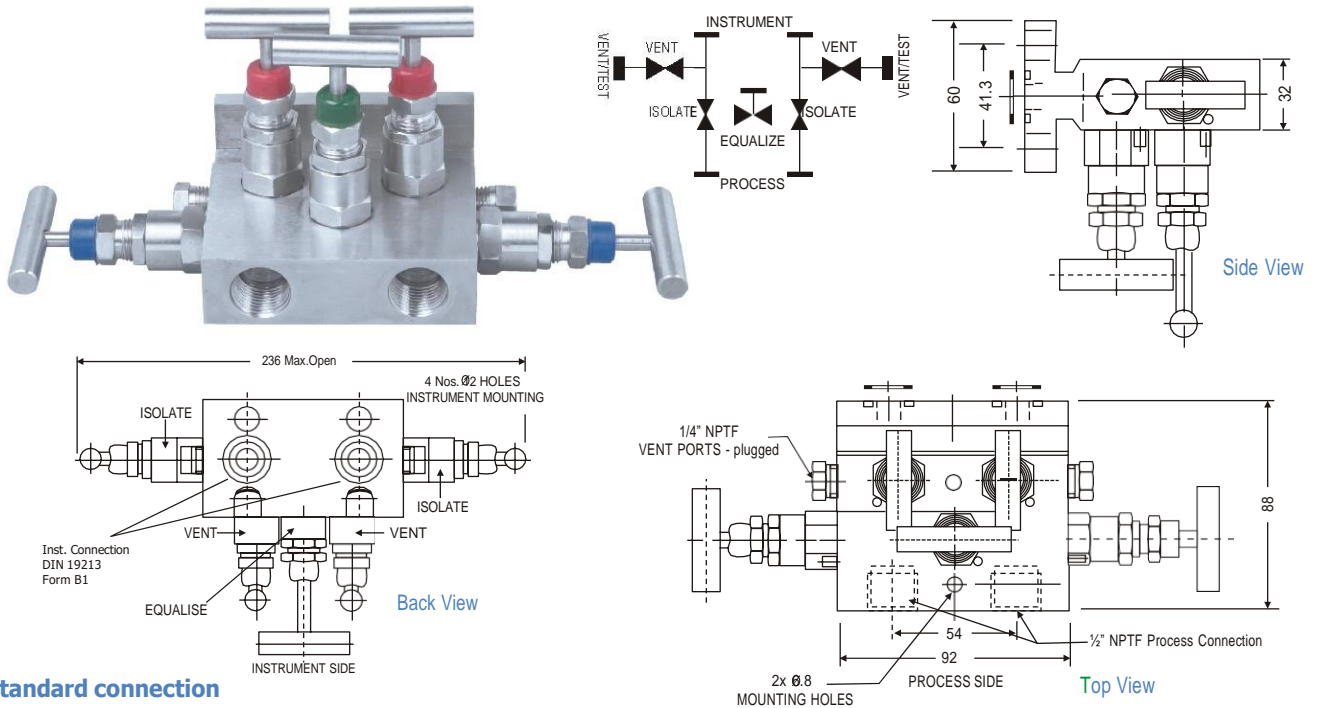
Product	Process Side	Instrument Side	Vent/Test
IPS-MV-PF5-04	1/2" NPT female	flanged	1/4" NPT female

## FIVE VALVE MANIFOLDS

### DIRECT MOUNT (Pipe to Flange)

IPS-MV-PF5-05

With threaded female ports on front side for instrument connection along with extended Flange for process connection. The two vent bonnets along with equalizing bonnet is positioned on the top side. The two isolation bonnets are positioned on left and right hand sides.



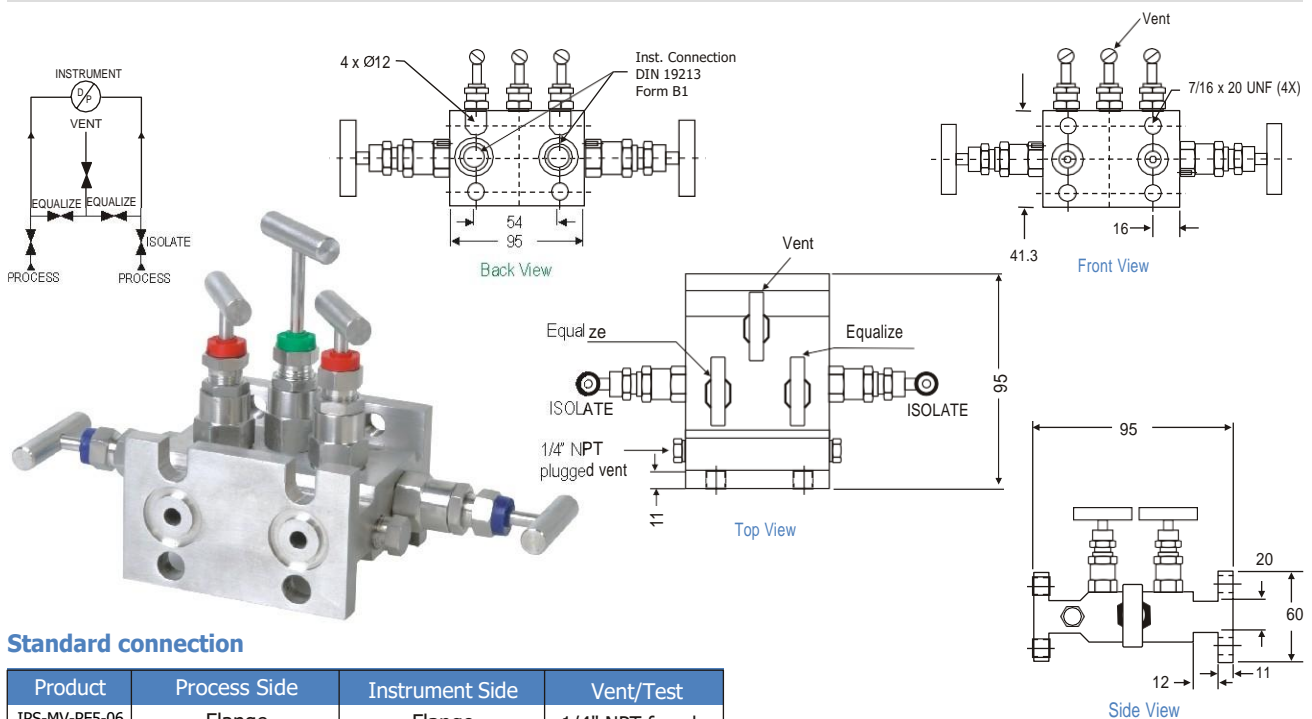
#### Standard connection

Product	Process Side	Instrument Side	Vent/Test
IPS-MV-PF5-05	1/2" NPT female	Flange	1/4" NPT female

### DIRECT MOUNT (Pipe to Flange)

IPS-MV-PF5-06

With Flange horizontal port inlets and Flange port outlets. The vent/test ports are positioned on the bottom side. The isolating and venting bonnets are positioned on the left and right hand side and the equalizing bonnet is positioned on the top side. Designed for direct mounting.



#### Standard connection

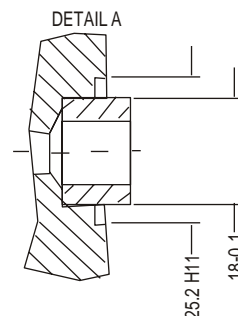
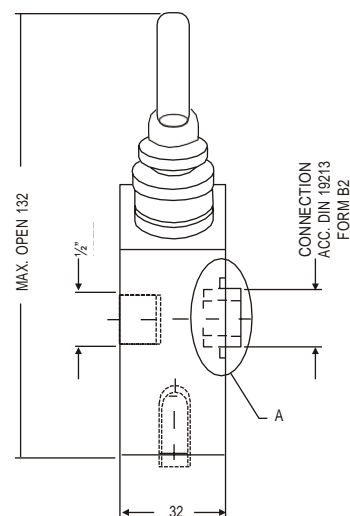
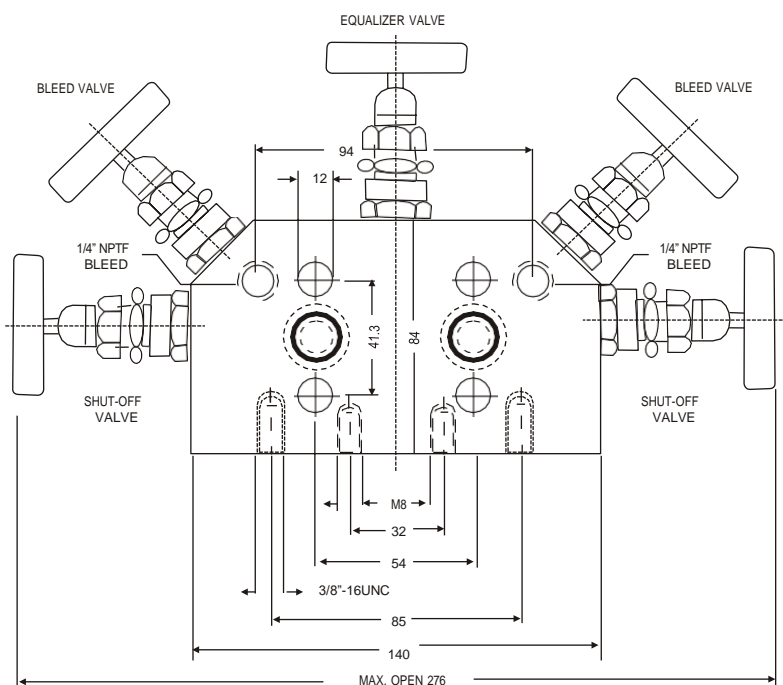
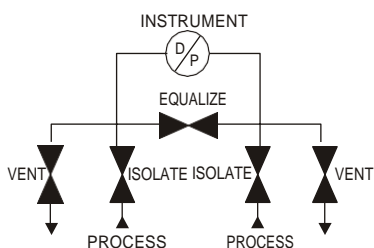
Product	Process Side	Instrument Side	Vent/Test
IPS-MV-PF5-06	Flange	Flange	1/4" NPT female

# FIVE VALVE MANIFOLDS

## DIRECT MOUNT (Pipe to Flange)

IPS-MV-PF5-07

Coplanar mounting Five Valve Manifold with drain plugs. This manifold has two isolating valves, one equalizer valve & two vent Valve. when assembled to transmitter has the advantage of compact size with easy for operation in minimum space. The direct mounting facility to the base of the differential pressure transmitter result in less leakage points and more accurate measurements. This model mainly use for Rosemount Transmitter Model 3051 the manifold Dimensions illustrated one for standard 54 mm instrument center but available for other center on request



For Further details please contact factory.

## FIVE VALVE MANIFOLDS



### DIRECT MOUNT (Pipe to Flange)

#### Specifications - Standard Version IPS-MV-PF5-03, IPS-MV-PF5-04, IPS-MV-PF5-05, IPS-MV-PF5-06, IPS-MV-PF5-07

Body	: SS 316
Stem	: SS 316
Valve assembly	: SS 316
'T' bar handle	: SS 304
Maximum working pressure	: 6000 PSI
Maximum working temperature	: 240°C
Packing	: PTFE
Type of stem	: Type CT; Stem with conical metal tip
Drain port	: 1/4" NPT [F]; provided with SS 316 plug
Hard Chrome plating	: Provided on stem tip.
Bracket mounting holes	: 4 Nos. With 12 mm ID.

#### How to order : IPS-MV-PF5-03, IPS-MV-PF5-04, IPS-MV-PF5-05, IPS-MV-PF5-06, IPS-MV-PF5-07

Body Material	Stem Type	Stem Packing	Size = Inlet x Outlet	Connections	Threads
C = Carbon Steel	CT (std)	P = PTFE (std)	4F= 1/2" x Flange	FD = Female x Flange (54mm)	N = NPT (ANSI B 1.20.1)
S = SS 316 (std)	DS	G = Grafoil	FF= Flange x Flange	DD = Flange x Flange	P = BSPP (BS 2779, ISO 228/1)
S4 = SS 304			2F = 1/4" x Flange	SW = Socket Weld	B = BSPT (BS 21, ISO 7/1)
SL = SS 316L					
M4 = Monel 400					
M5 = Monel 500					
H = Hastelloy C					

#### Options -

IE	: Handle circular.
TF	: Compliance to NACE standard MR-0175.
SG	: For Oxygen service, valves are supplied cleaned, degreased and suitably packed.
GH	: Material test certificate
GO	: Hydro test certificate
MB	: Mounting Bracket
MBC	: Mounting bolts (7/16" UNF) in carbon steel (Model : MBC - M45, MBC - M25)
MBS	: Mounting bolts (7/16" UNF) in SS (Model : MBS - M45, MBS - M25)
PRF	: PTFE Ring For Flange Seal
GRF	: Grafoil Ring For Flange Seal
BLD4	: Bleeder 1/4" NPT (Male)
ATV	: Anti Tamper valve
ATK	: Anti Tamper key

#### Example:

To place an order simply refer to the codes in the table.

Valve Type : Body Material + Stem Packing + Size + Connection + Threads + Options

#### NOTE:

- The weld prepared types are available with female plain end - suitable for socket weld.
- Anti-tamper bonnet - special design on request with locking arrangement if desired.

